

Accessories

Control relays and auxiliary contact blocks

Model Designation

CR2-1040G7
1 2 3

Note: rated 20A max at 600Vac
general use and 7.5HP max
at 575Vac 3Phase

1.Type

10	Control Circuit AC
----	--------------------

2.Contacts

10	
40	4a
22	2a2b
31	3a1b
13	1a3b
04	4b

3.Coil Control Voltage

Detail page 1-1



CR2-1022

Model Name	Contacts N/O	Contacts N/C	Insulation Voltage	Thermal Current	Weight Kg	Approval
CR2-1040	4	-	660V	20A	0.335	UL, CE
CR2-1031	3	1	660V	20A	0.335	UL, CE
CR2-1022	2	2	660V	20A	0.335	UL, CE
CR2-1013	1	3	660V	20A	0.335	UL, CE
CR2-1004	0	4	660V	20A	0.335	UL, CE

Auxiliary contact blocks

CA1-D11

1 2

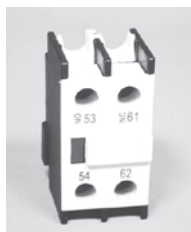
Note: Rated 10A max at 600Vac
Ui:600V
Ith:10A

1.Series

CA1	Top mtg.
CA6	Top mtg.
CA8	Side mtg.
CA9	Mechanical Interlock

2.Contacts

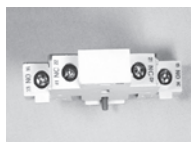
20	2a	31	3a1b
11	1a1b	13	1a3b
02	2b	22	2a2b
40	4a	04	4b



CA1-D11



CA6-D11



CA8-D11

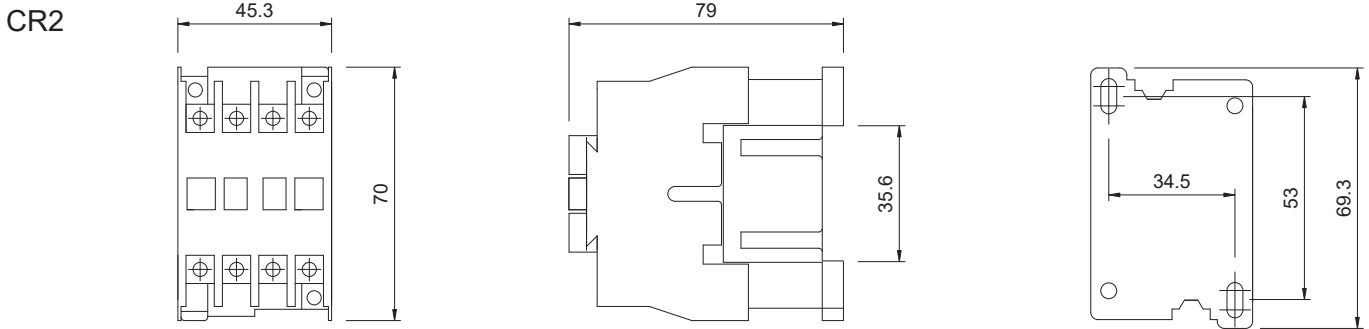


CA9-DO2

Model Name	Applicable Contactor	Auxiliary N/O	Contacts N/C	Insulation Voltage	Thermal Current	Weight Kg	Approval
CA1-D20	C-09D to C-100D11	2	-	660V	10A	0.033	UL, CE
CA1-D11	C-09D to C-100D11	1	1	660V	10A	0.033	UL, CE
CA1-D02	C-09D to C-100D11	-	2	660V	10A	0.033	UL, CE
CA1-D40	C-09D to C-100D11	4	-	660V	10A	0.059	UL, CE
CA1-D31	C-09D to C-100D11	3	1	660V	10A	0.059	UL, CE
CA1-D22	C-09D to C-100D11	2	2	660V	10A	0.059	UL, CE
CA1-D13	C-09D to C-100D11	1	3	660V	10A	0.059	UL, CE
CA1-D04	C-09D to C-100D11	-	4	660V	10A	0.059	UL, CE
CA6-D20	C-06D	2	-	660V	10A	0.032	CE
CA6-D11	C-06D	1	1	660V	10A	0.032	CE
CA6-D02	C-06D	-	2	660V	10A	0.032	CE
CA6-D40	C-06D	4	-	660V	10A	0.032	CE
CA6-D31	C-06D	3	1	660V	10A	0.032	CE
CA6-D22	C-06D	2	2	660V	10A	0.032	CE
CA6-D13	C-06D	1	3	660V	10A	0.032	CE
CA6-D04	C-06D	-	4	660V	10A	0.032	CE
CA8-D20	C-09D to C-100D11	2	-	660V	10A	0.035	UL, CE
CA8-D11	C-09D to C-100D11	1	1	660V	10A	0.035	UL, CE
CA8-D02	C-09D to C-100D11	-	2	660V	10A	0.035	UL, CE
CA9-D02	C-09D to C-100D11	-	2	660V	10A	0.035	UL, CE

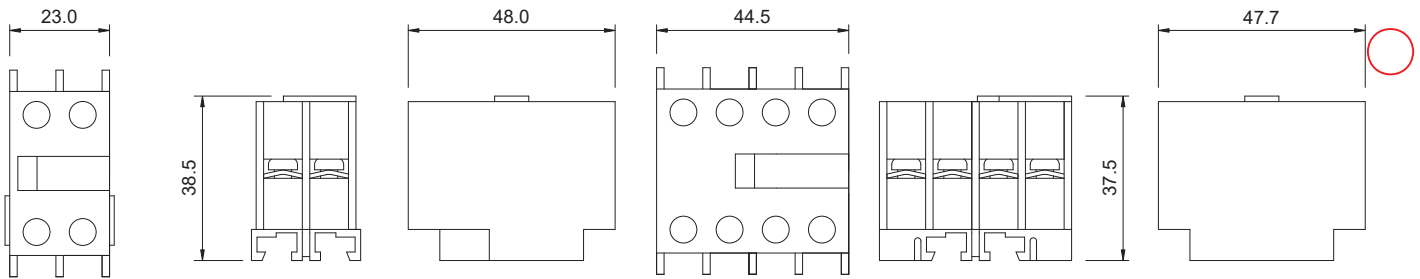
CR2/CA1/CA6/CA8/CA9/45D-02C

Dimensions(mm)



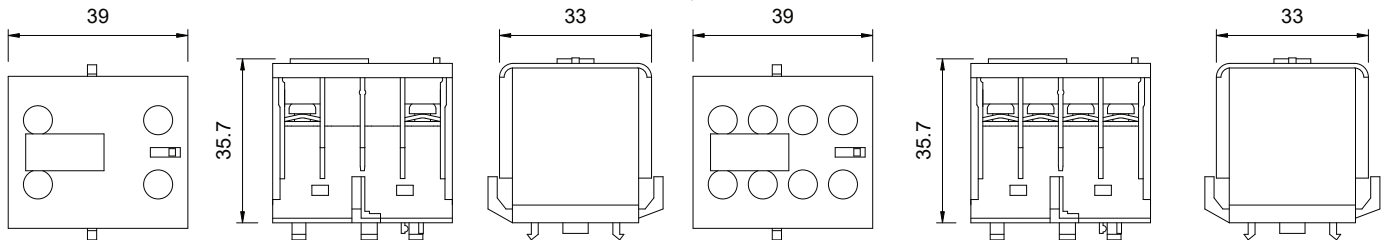
CA1-DXX(2P)

CA1-DXX(4P)



CA6-DXX(2P)

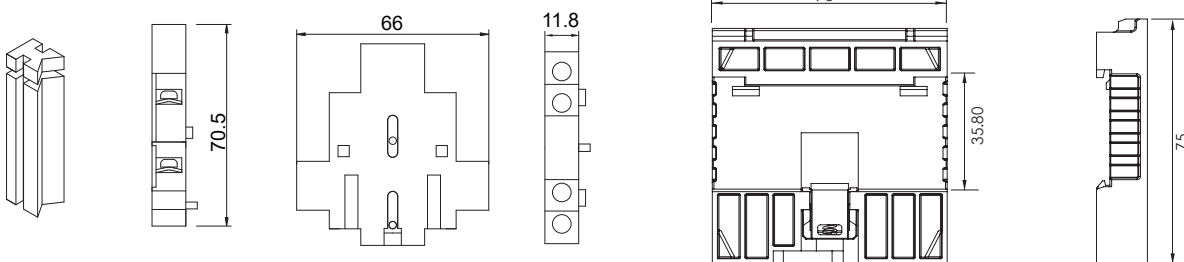
CA6-DXX(4P)



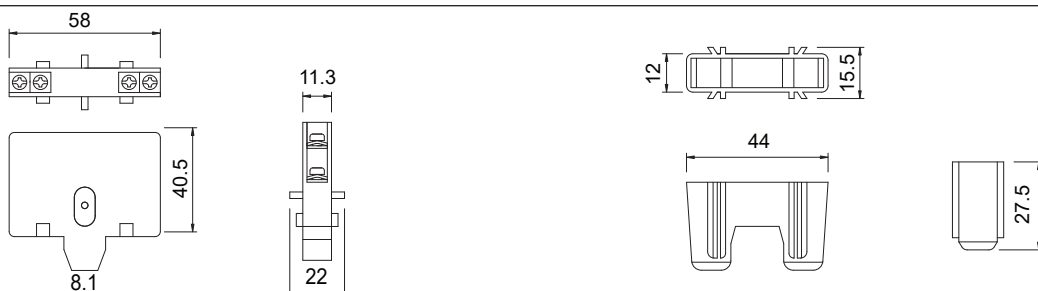
CA8-DXX(2P)

45D-02C

C-45D to C-100D



CA9-D02



Accessories

Coils for contactor

Model Designation

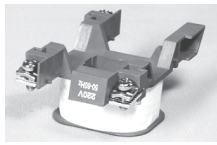
CL—09DG7
 1 2

1.Type

C	09D 25D 45D 80D 09DC 25DC 45DC 80DC
S	C11 C12 C21 C35 C50 C65 C100 C150 C220
AC	201 202 203 204
SMC	09 50 100 SMD 09

2.Coil Control Voltage

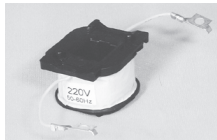
Detail Page 1-1



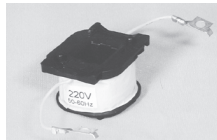
CL-09D



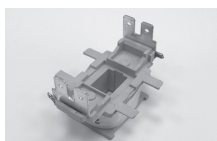
CL-45D



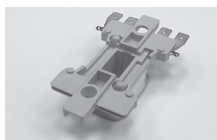
CL-C11



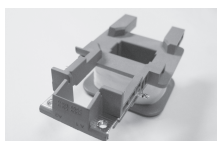
CL-C100



CL-202

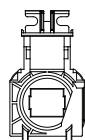


CL-203

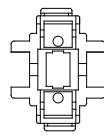


CL-S50

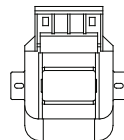
Model Name	Applicable Contactors	Weight Kg.
CL-06D	C-06D	0.035
CL-09D	C-09D~C-18D	0.060
CL-25D	C-25D~C-35D	0.070
CL-45D	C-45D~C-65D	0.100
CL-80D	C-80D~C-100D	0.105
CL-09DC	C-09DC~C-18DC	0.062
CL-25DC	C-25DC~C-35DC	0.072
CL-45DC	C-45DC~C-65DC	0.102
CL-80DC	C-80DC~C-100DC	0.102
CL-C11	S-C11	0.044
CL-C12	S-C12~S-C16	0.038
CL-C21	S-C21	0.082
CL-C35	S-C35	0.125
CL-C50	S-C50~S-C60	0.130
CL-C65	S-C65~S-C80	0.152
CL-C100	S-C100~S-C125	0.200
CL-C150	S-C150	0.440
CL-C220	S-C220	0.940
CL-201	AC201~AC501	0.047
CL-202	AC202~AC502	0.036
CL-203	AC203~AC503	0.042
CL-204	AC204~AC504	0.069
CL-S09	SMC09~SMC40	0.077
CL-S50	SMC50~SMC85	0.133
CL-S100	SMC75~SMC100 (100AF)	0.133
CL-S09DC	SMD09~SMD40	0.160



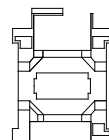
CL-S09



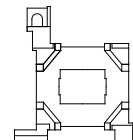
CL-202



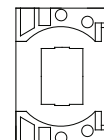
CL-204



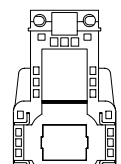
CL-09D



CL-25D



CL-45D



CL-S100