

## MVS-32/33/34 Series

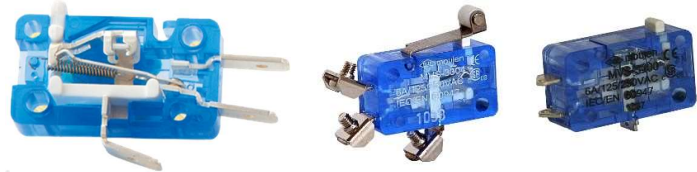
### Miniature Basic Switch

#### ◆ Features

- ✓ Standard transparent miniature, and durable, switch for mass application
- ✓ Positive Opening contacts
- ✓ #250 Quick connect, M3 Screw, and Solder terminals
- ✓ Tin-plated brass terminals for better oxidation resistance

#### ◆ Recognition(s)

- ✓ CE – EN60947
- ✓ CSA – 6241 90
- ✓ RoHS Compliant
- ✓ Reach Unaffected



#### ◆ Characteristics

Positive Opening	Electrical Contact	Terminal Type	Contact Form(s)	Poles & Throws	Actuation Sequence(s)
Yes	3 Points	Screw (M3), or Quick Connect (#250), or solder	Form C	SPDT Snap	Break(1) Make(2)

Operating Temp.	AC Rated	DC Rated	IP	Oil Resist	Dust Resist	Water Resist	Operating Speed
-40 to 85 Celsius	6A 125V-250V	0.5A 125V	40	No	No	No	0.01mm to 1m/sec

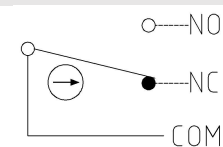
Operation Frequency	Contact Resistance	Insulation Resistance	Vibration
Mechanically: 60/min Electrically: 30/min	30mΩ max. (initial)	100MΩ min. (500VDC)	1.5mm amplitude at 10-55Hz

Storage Humidity	Service Life (min.)	Dielectric Strength
85% RH max	Mechanically: 10,000,000 operations Electrically: 500,000 operations	1000VAC, 50/60Hz for 1 minute between non-continuous terminals

#### Recommended tightening forces

Purpose	Screw type	Tightening
Mounting	M3	0.39~0.59 N·m
Screw terminals	M3	0.25±0.05 N·m

#### Circuitry



**◆ Materials**

Actuation touch part	Electrical contact point	Enclosure
Stainless Steel SUS304 (levers), or Nylon+glass fiber (plungers), or POM (rollers)	Silver-Nickel Alloy <u>Custom:</u> Gold-plated Silver-Nickel Alloy	PC Plastic

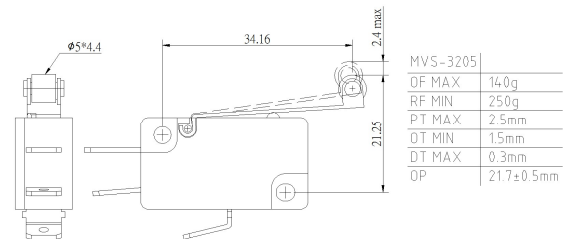
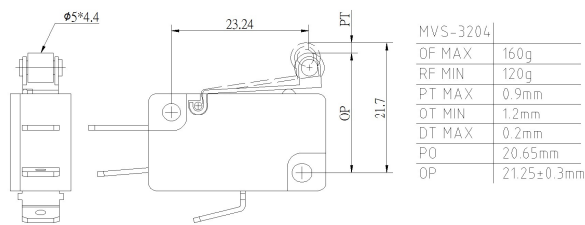
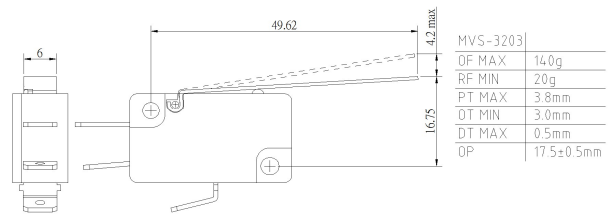
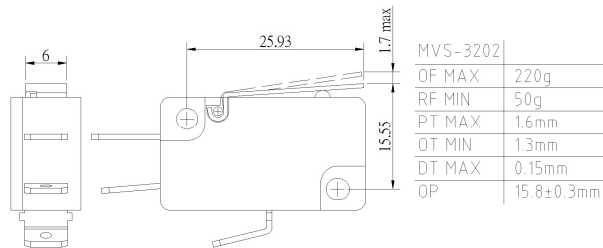
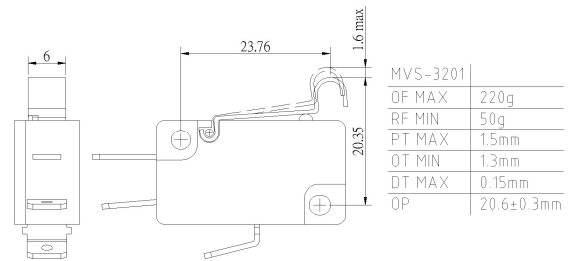
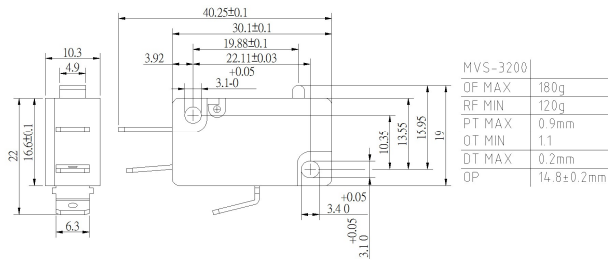
**◆ Nomenclature**

Series:	Terminal Type:	Actuator:
<b>MVS –</b>	<b>32</b>	<b>00</b>
	32=#250 Quick Connect 33=M3 Screw 34=Solder	<u>Touch part, Plastic</u> 00=Nylon pin plunger 04=POM roller lever 05=POM roller lever, long  <u>Touch part, Stainless Steel</u> 01=SUS304 simulated roller lever 02=SUS304 lever 03=SUS304 lever long

### ◆ Dimensions & Operating Characteristics

\*Terminal types do not affect actuator operating characteristics

\*Measurements in *millimeters*



MVS-3200



MVS-3201



MVS-3202



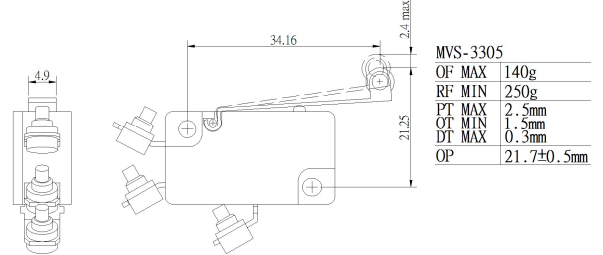
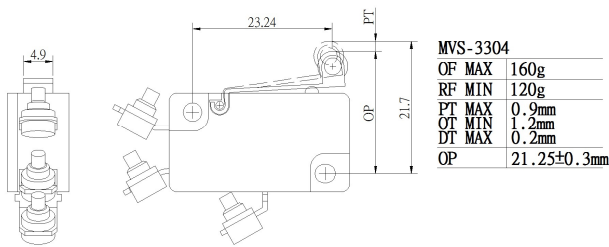
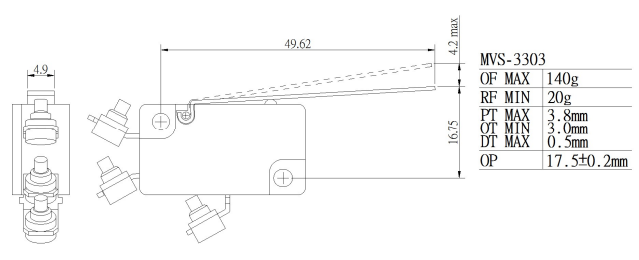
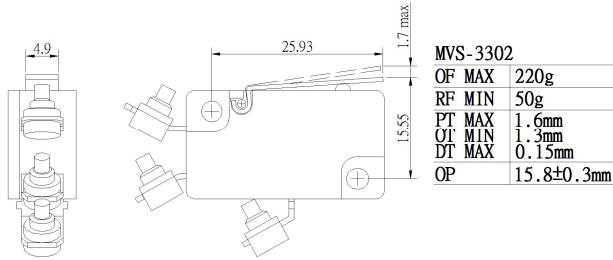
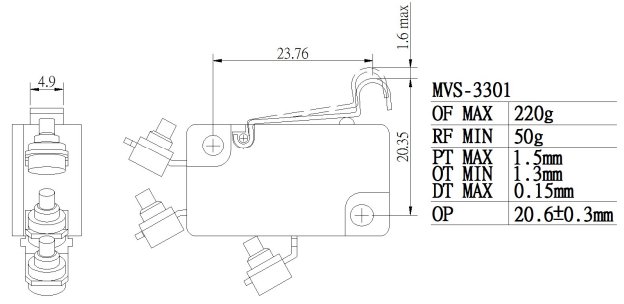
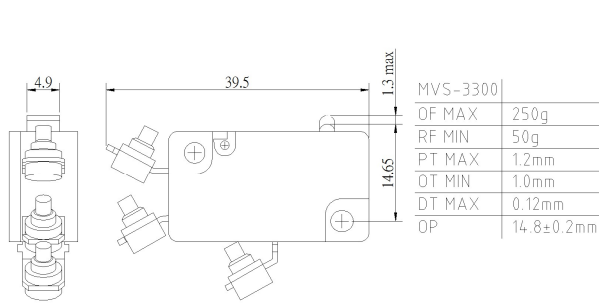
MVS-3203



MVS-3204



MVS-3205


**MVS-3300**

**MVS-3301**

**MVS-3302**

**MVS-3303**

**MVS-3304**

**MVS-3305**

**MVS-36 Series**  
**Miniature Basic Switch**
**◆ Features**

- ✓ Complete seal, IP67-rated, with 0.5 m wire-out (AWG20)
- ✓ Positive Opening contacts
- ✓ Forms C, A, and B contact variations available
- ✓ Tin-plated brass terminals for better oxidation resistance

**◆ Recognition(s)**

- ✓ CE – EN60947
- ✓ CSA – 6241 90
- ✓ RoHS Compliant
- ✓ Reach Unaffected


**◆ Characteristics**

Positive Opening	Electrical Contact	Terminal Type	Contact Form(s)	Poles & Throws	Actuation Sequence(s)
------------------	--------------------	---------------	-----------------	----------------	-----------------------

Yes	2 or 3 Points	Wire (0.5m)	Form C, A, or B	SPDT Snap or SPST-NO or SPST-NC	Break(1) Make(2) or Single Make or Single Break
-----	---------------	-------------	-----------------	---------------------------------	---

Operating Temp.	AC Rated	DC Rated	IP	Oil Resist	Dust Resist	Water Resist	Operating Speed
-----------------	----------	----------	----	------------	-------------	--------------	-----------------

-40 to 80 Celsius	1.5A 230V	0.5A 60V	67	Yes	Yes	Yes	0.01mm to 1m/sec
-------------------	-----------	----------	----	-----	-----	-----	------------------

Operation Frequency	Contact Resistance	Insulation Resistance	Vibration
---------------------	--------------------	-----------------------	-----------

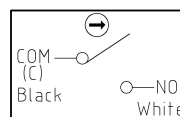
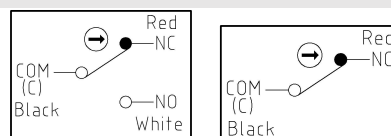
Mechanically: 60/min Electrically: 30/min	30mΩ max. (initial)	100MΩ min. (500VDC)	1.5mm amplitude at 10-55Hz
--	---------------------	---------------------	----------------------------

Storage Humidity	Service Life (min.)	Dielectric Strength
------------------	---------------------	---------------------

85% RH max	Mechanically: 5,000,000 operations Electrically: 50,000 operations	1000VAC, 50/60Hz for 1 minute between non-continuous terminals
------------	---	--

Recommended tightening forces	Circuitry
-------------------------------	-----------

Purpose	Screw type	Tightening
Mounting	M3	0.39~0.59N·m



**◆ Materials**

Actuation touch part	Electrical contact point	Enclosure
Stainless Steel SUS304 (levers), or POM+glass fiber (plunger & rollers)	Silver 99.9% <u>Custom:</u> Gold-plated Silver	PC Plastic

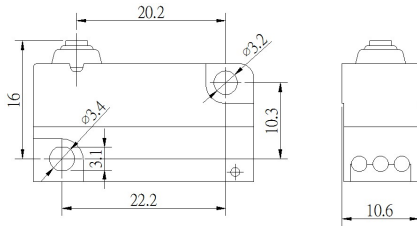
**◆ Nomenclature**

Series:	Terminal Type:	Actuator:	Contact Form:
<b>MVS –</b>	<b>36</b>	<b>00 –</b>	<b>NC</b>
	36=sealed wire-out	<u>Touch part, Plastic</u> 00=POM pin plunger 04=POM roller lever 05=POM roller lever, long  <u>Touch part, Stainless Steel</u> 01=SUS304 simulated roller lever 02=SUS304 lever 03=SUS304 lever long	Blank=Form C (3 wires) NO=Form A (2 wires) NC=Form B (2 wires)

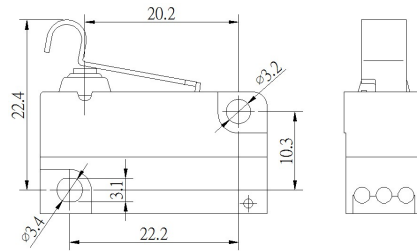
**MVS-36**
**◆ Dimensions & Operating Characteristics**

 \*Measurements in *millimeters*

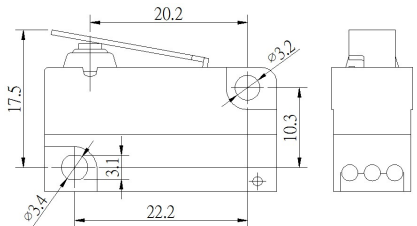
\*NO/NC contact forms do not affect operating characteristics; examples below are Form C contacts (3 wires)



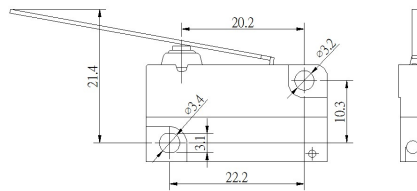
<b>MVS-3600</b>	
OF MAX	150g
RF MIN	107g
PT MAX	1.0mm
OT MIN	1.6mm
DT	0.6mm
OP	15±1mm



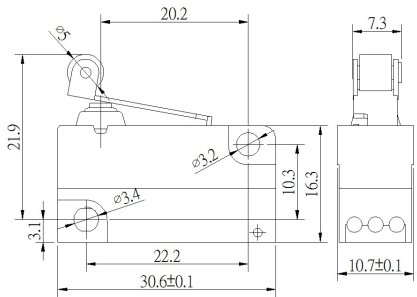
<b>MVS-3601</b>	
OF MAX	126g
RF MIN	68g
PT MAX	1.1mm
OT MIN	2.5mm
DT	0.5mm
OP	21.3±1mm



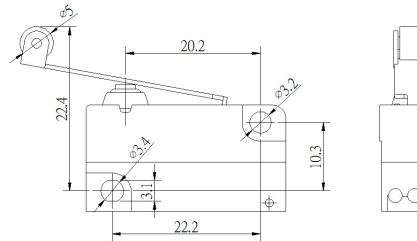
<b>MVS-3602</b>	
OF MAX	96g
RF MIN	61g
PT MAX	1.4mm
OT MIN	2.3mm
DT	0.8mm
OP	16.1±1mm



<b>MVS-3603</b>	
OF MAX	50g
RF MIN	8g
PT MAX	2.9mm
OT MIN	6.0mm
DT	1.1mm
OP	18.5±1mm



<b>MVS-3604</b>	
OF MAX	127g
RF MIN	99g
PT MAX	1.1mm
OT MIN	0.5mm
DT	0.5mm
OP	20.8±1mm



<b>MVS-3605</b>	
OF MAX	74g
RF MIN	56g
PT MAX	2mm
OT MIN	4.1mm
DT	0.9mm
OP	20.4±1mm



MVS-3600

MVS-3601

MVS-3602

MVS-3603

MVS-3604

MVS-3605