

PUSH BUTTON SWITCHES / 按鈕開關 22Φ / 25Φ

(NON-ILLUMINATED & LED ILLUMINATED) / 無照光按鈕與照光按鈕

Model Designation :

型號說明

NPB22-F11GA

1 2 3 4 5

1. Series (系列)

NPB22	Non-Illuminated 無照光按鈕
NLB22	Led Illuminated 照光按鈕

3. Contact Blocks (接點)

10	1a	21	2a1b
01	1b	12	1a2b
11	1a1b	22	2a2b
20	2a	02	2b

4. Color (顏色)

NPB22		NLB22	
R	Red 紅色	R	Red 紅色
G	Green 綠色	G	Green 綠色
Y	Yellow 黃色	Y	Yellow 黃色
S	Blue 藍色	S	Blue 藍色
B	Black 黑色	W	White 白色
W	White 白色		

2. Type (型式)

NPB22		NLB22	
F	Flush Head 平頭	T	Twist To Release Head (40Ø) 大頭連鎖式(40Ø)
E	Elevation Head 凸頭	R	Twist To Release Head (40Ø) 大頭連鎖式(40Ø)
M	Mushroom Head (40Ø) 大頭(40Ø)	S	Pull To Release Mushroom Head 35Ø 復歸拉卡連鎖式(35Ø)
K	Mushroom Head (40Ø) (With key) 大頭附鎖 (40Ø)	D	Double Push Button 兩點式按鈕
L	Flush Head Maintained 平頭停置	G	Mushroom Head Maintained (40Ø) 大頭停置(40Ø)
P	Elevation Head Maintained 凸頭停置	H	Pull To Release Mushroom Head (40Ø) 復歸拉卡連鎖式(40Ø)
J	Twist To Release Mushroom Head (40Ø) 大頭連鎖式(40Ø)	I	Twist To Release Mushroom Head (40Ø) 大頭連鎖式(40Ø)
		DM	Double Push Button with Metal Frame 金屬框兩點式按鈕
		M6	Mushroom Head 60Ø 大頭(60Ø)
		T6	Twist To Release Mushroom Head (60Ø) 大頭連鎖式(60Ø)
		DM	Double Push Button with Metal Frame 金屬框兩點式按鈕
		R	Twist To Release Head (40Ø) 大頭連鎖式(40Ø)
		T	Twist To Release Head (40Ø) 大頭連鎖式(40Ø)
		DM	Double Push Button with Metal Frame 金屬框兩點式按鈕

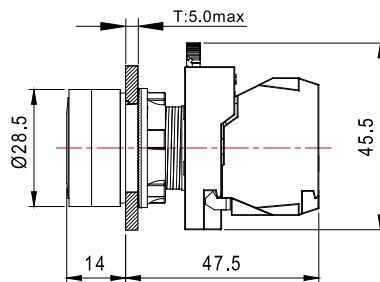
5. Voltage Rating (電壓)

	NLB22
A	AC.DC 24V
E	AC.DC 100~120V
I	AC.DC 220~240V
M	AC 380~440V
Y	AC.DC 12V

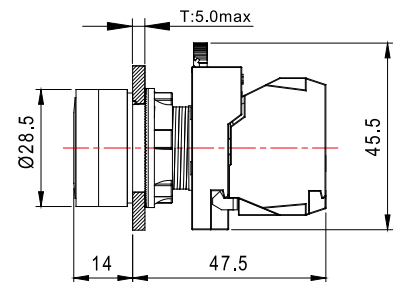
SPECIFICATION

Unit (單位) : mm

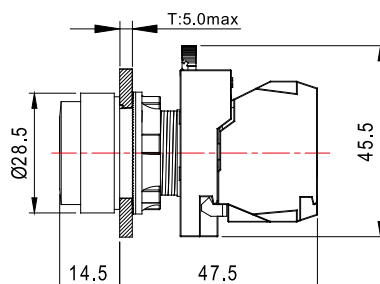
NPB22-F



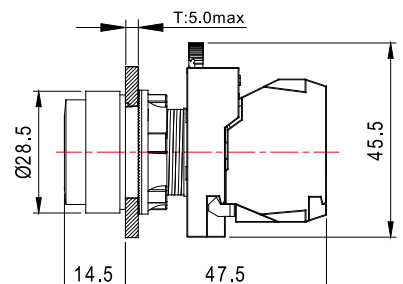
NLB22-F



NPB22-E

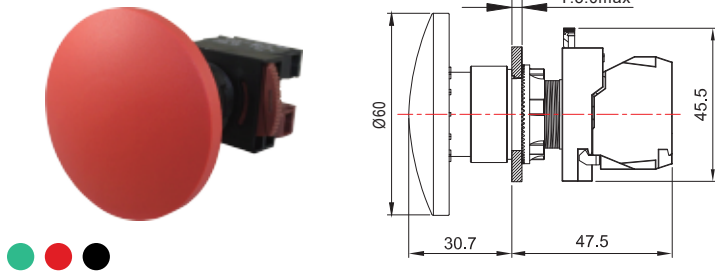


NLB22-E

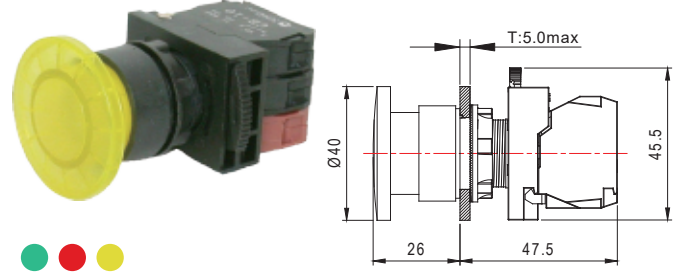


(NON-ILLUMINATED & LED ILLUMINATED) / 無照光按鈕與照光按鈕

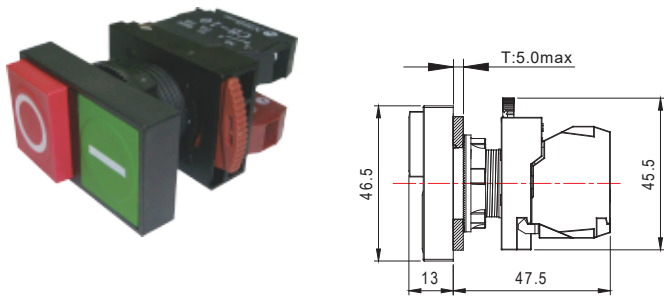
NPB22-M6



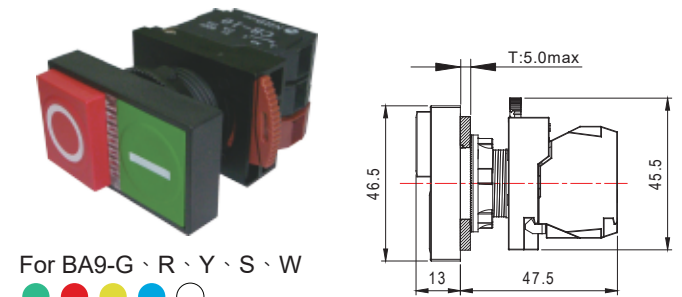
NLB22-M



NPB22-D



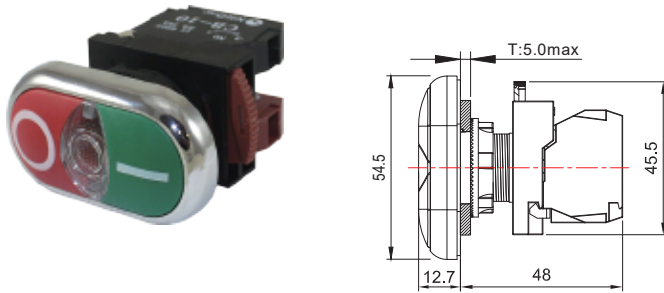
NLB22-D



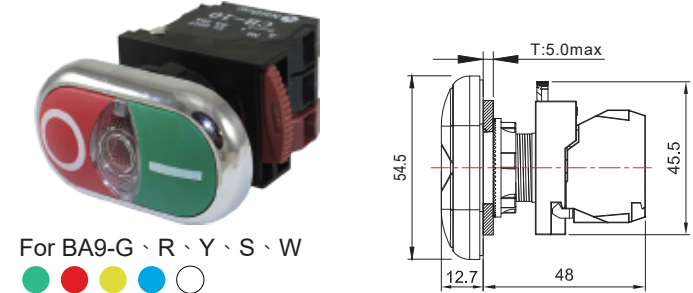
For BA9-G、R、Y、S、W



NPB22-DM



NLB22-DM

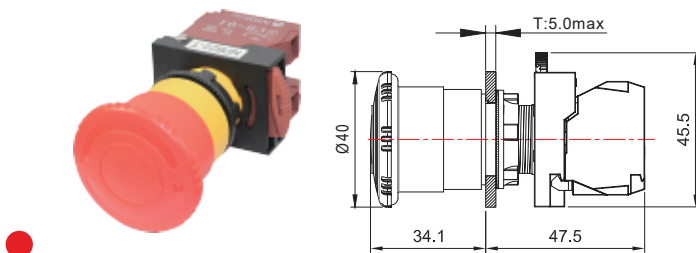


For BA9-G、R、Y、S、W

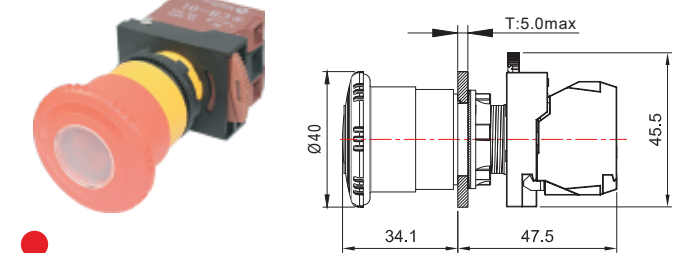


Emergency Stop / 緊急停止按鈕系列

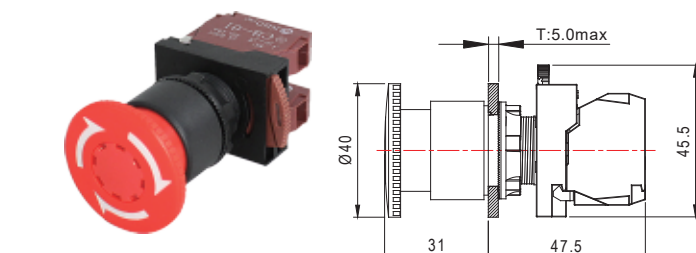
NPB22-T



NLB22-T



NPB22-R



NLB22-R

